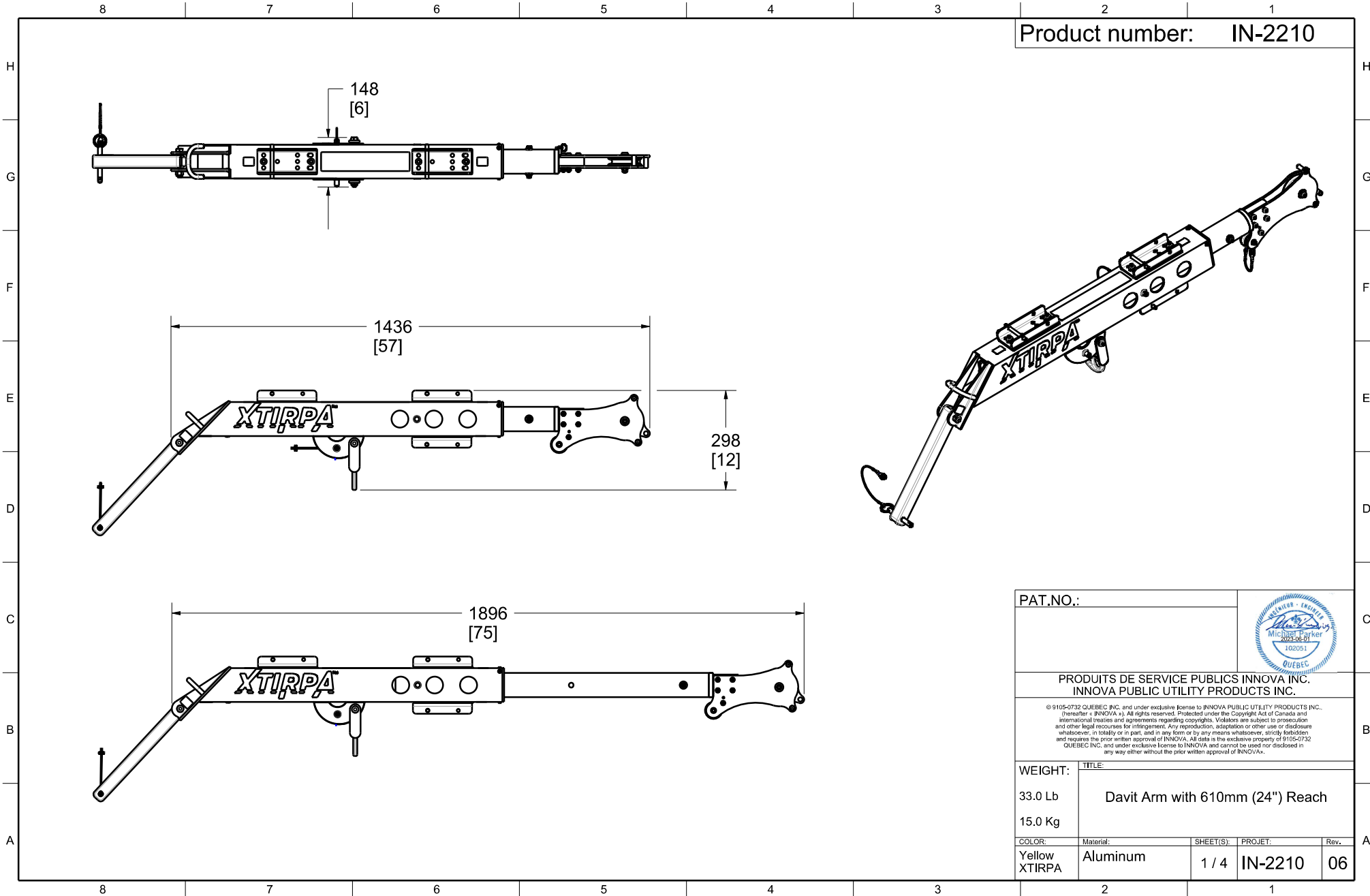
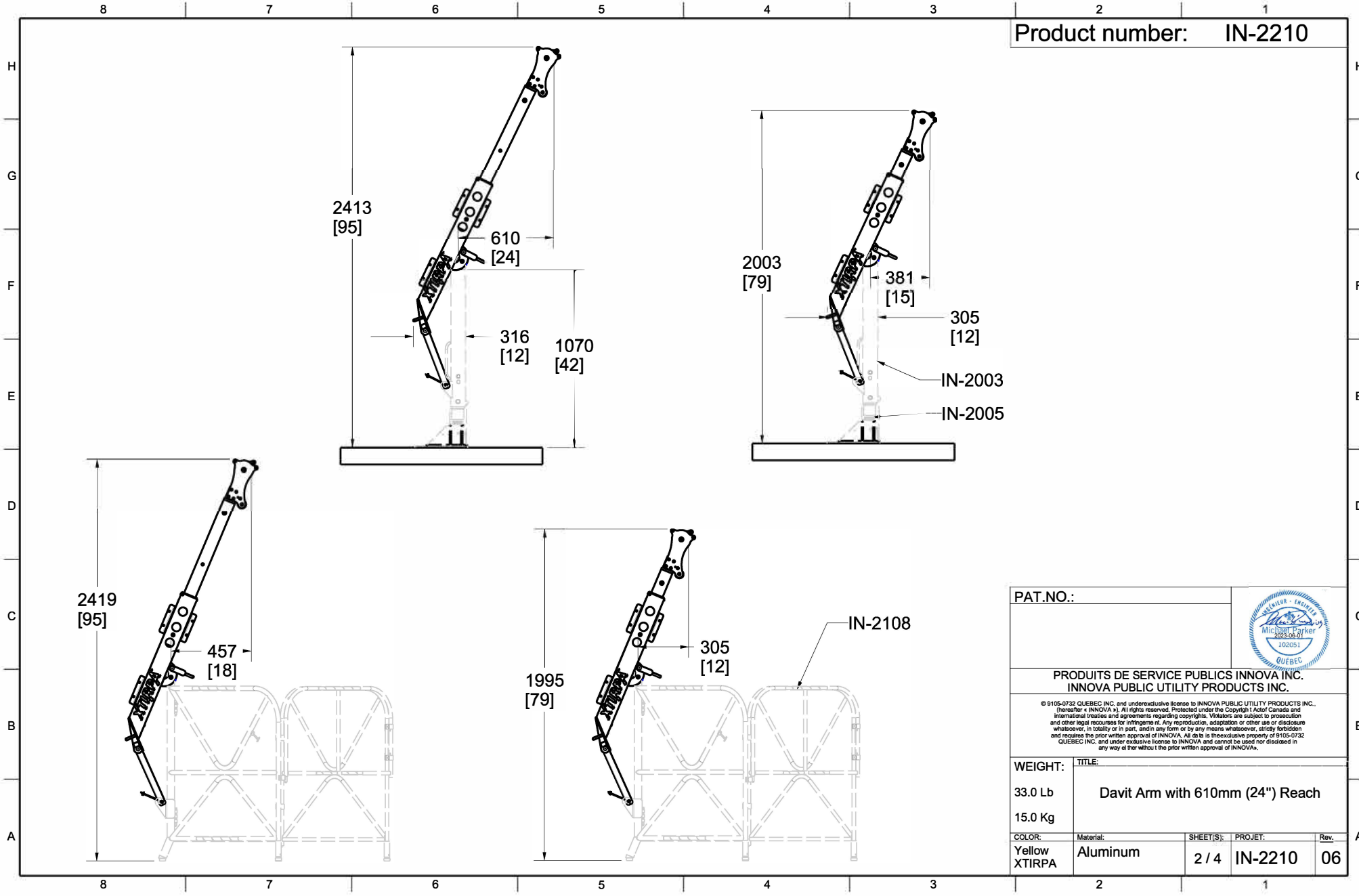


Product number: **IN-2210**



PAT.NO.:				
PRODUITS DE SERVICE PUBLICS INNOVA INC. INNOVA PUBLIC UTILITY PRODUCTS INC.				
<small>© 9105-0732 QUEBEC INC. and under exclusive license to INNOVA PUBLIC UTILITY PRODUCTS INC. (hereafter « INNOVA »). All rights reserved. Protected under the Copyright Act of Canada and international treaties and agreements regarding copyrights. Violators are subject to prosecution and other legal recourses for infringement. Any reproduction, adaptation or other use or disclosure whatsoever, in totality or in part, and in any form or by any means whatsoever, strictly forbidden and requires the prior written approval of INNOVA. All data is the exclusive property of 9105-0732 QUEBEC INC. and under exclusive license to INNOVA and cannot be used nor disclosed in any way either without the prior written approval of INNOVA.</small>				
WEIGHT:	TITLE:			
33.0 Lb	Davit Arm with 610mm (24") Reach			
15.0 Kg				
COLOR:	Material:	SHEET(S):	PROJET:	Rev.
Yellow XTIRPA	Aluminum	1 / 4	IN-2210	06



PAT.NO.:		
PRODUITS DE SERVICE PUBLICS INNOVA INC. INNOVA PUBLIC UTILITY PRODUCTS INC.		
<small>© 9105-0732 QUEBEC INC. and under exclusive license to INNOVA PUBLIC UTILITY PRODUCTS INC. (hereafter « INNOVA »). All rights reserved. Protected under the Copyright Act (Canada) and International treaties and agreements regarding copyrights. Violators are subject to prosecution and other legal recourse for infringement. Any reproduction, adaptation or other use or disclosure whatsoever, in totality or in part, and in any form or by any means whatsoever, strictly forbidden and requires the prior written approval of INNOVA. All rights are the exclusive property of 9105-0732 QUEBEC INC. and under exclusive license to INNOVA and cannot be used nor disclosed in any way at the without the prior written approval of INNOVA.</small>		
WEIGHT:	TITLE:	
33.0 Lb	Davit Arm with 610mm (24") Reach	
15.0 Kg		
COLOR:	Material:	SHEET(S):
Yellow XTIRPA	Aluminum	2 / 4
		PROJET:
		IN-2210
		Rev.
		06

**SPECIFICATIONS**

This equipment is considered as part of a personal fall arrest system (PFAS).  
It is only to be used in conjunction with a personal fall arrest system that limits the maximum arrest force (MAF) to 6.0 kN.

	With IN-2003	With IN-2108 / IN-2324
Working load limit (WLL) :	164 kg (360 lb)	191 kg (420 lb)
Minimum breaking strength for anchorage 1 (F1) :	16,3 kN (3 664 lbf)	19,2 kN (4 310 lbf)
Minimum breaking strength for anchorage 2 (F2) :	16,3 kN (3 664 lbf)	19,2 kN (4 310 lbf)
Minimum breaking strength for anchorage 3 (F3) :	22,2 kN (5 000 lbf)	22,2 kN (5 000 lbf)
Minimum breaking strength for anchorage 4 (F4) :	8,0 kN (1 800 lbf)	9,8 kN (2 200 lbf)

**STANDARDS**

Name	Classification	Year	Users
ANSI Z359.1		1992 (R1999)	1
CSA Z259.2.1		1998 (R2011)	1
OSHA 1910.66			1
EN 795	A,B,E	2012	2
TS 16415		2013	2

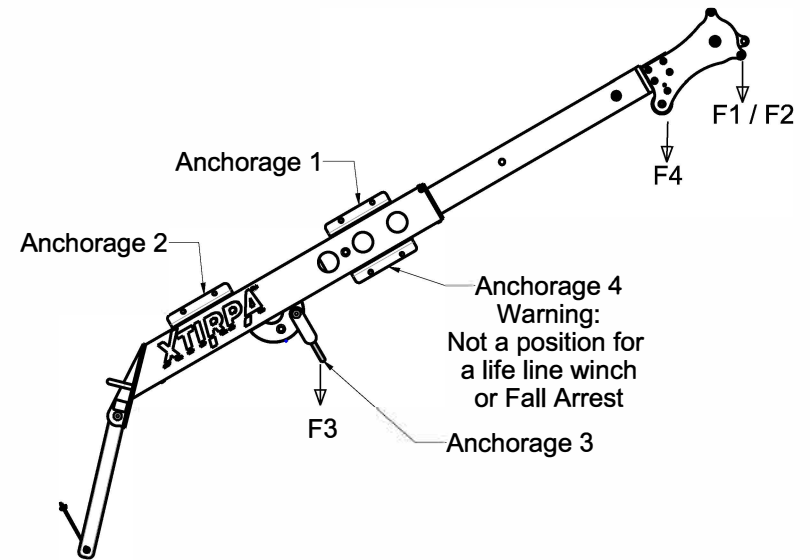
**MATERIAL AND CONSTRUCTION**

Structure : Aluminum  
Welding procedure : CSA W59.2 / CSA W47.2 & CSA W59.18 / CSA W47.1 & AWS D1.6  
Surface Finishing : Yellow XTIRPA

**RESTRICTIONS**

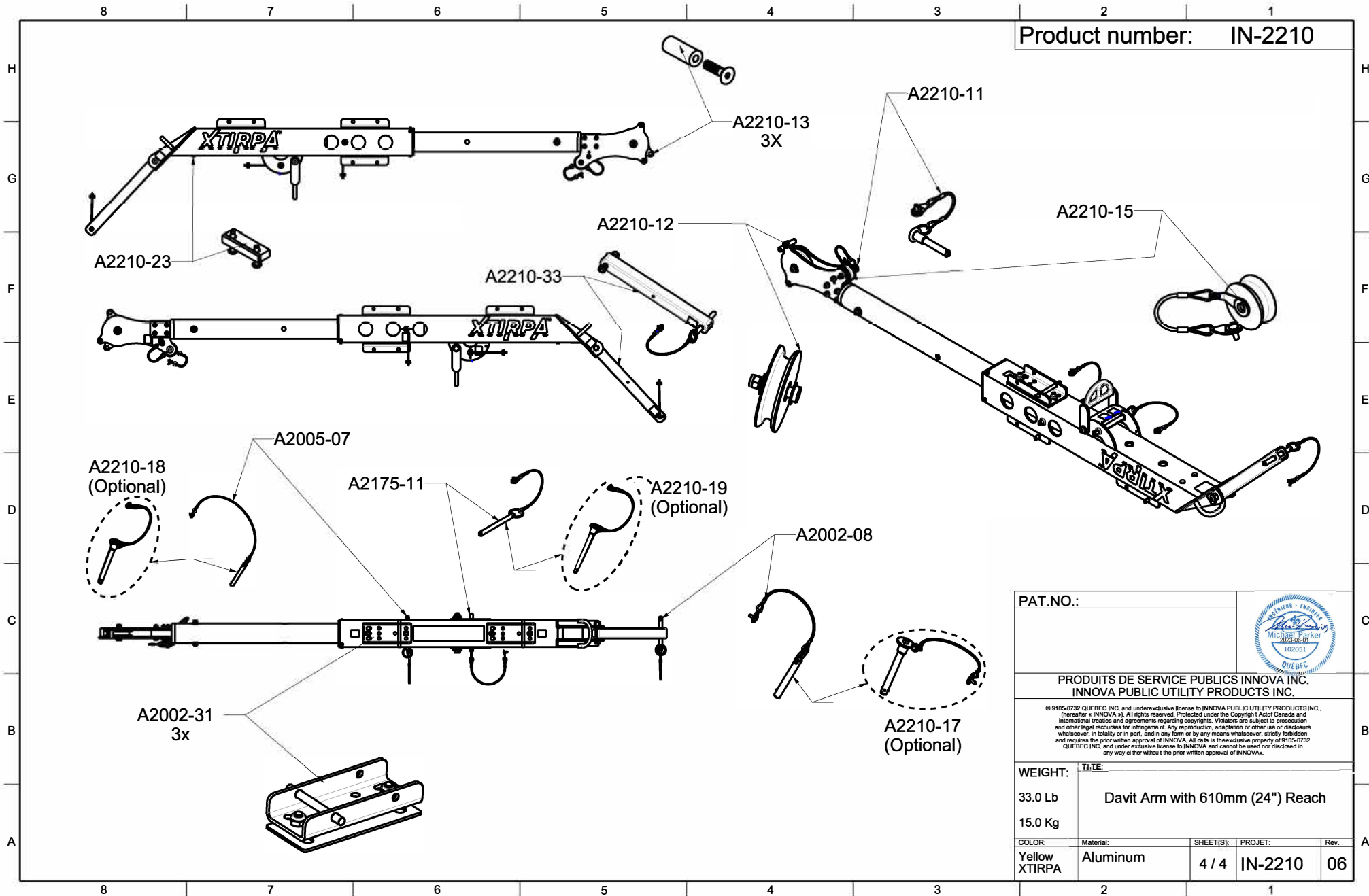
This equipment is to be used only with products approved by Innova Public Utility Products Inc.  
This equipment must always be operated on a level surface.  
Ensure that all hardware and connecting pins are properly installed before use.  
In the occurrence of a fall or the safety of the equipment is in doubt, the equipment must be immediately removed from service and inspected by qualified personnel before reuse.

Product number: **IN-2210**



**Also Available Clear Anodized**

PAT.NO.:			
PRODUITS DE SERVICE PUBLICS INNOVA INC. INNOVA PUBLIC UTILITY PRODUCTS INC.			
<small>© 9105-0732 QUEBEC INC. and under exclusive license to INNOVA PUBLIC UTILITY PRODUCTS INC. (hereafter « INNOVA »). All rights reserved. Protected under the Copyright Act (Canada) and international treaties and agreements regarding copyrights. Violators are subject to prosecution and other legal recourse for infringement. Any reproduction, adaptation or other use or disclosure whatsoever, in totality or in part, and in any form or by any means whatsoever, strictly forbidden and requires the prior written approval of INNOVA. All rights are the exclusive property of 9105-0732 QUEBEC INC. and under exclusive license to INNOVA and cannot be used nor disclosed in any way at the without the prior written approval of INNOVA.</small>			
WEIGHT:	TITLE:		
33.0 Lb	Davit Arm with 610mm (24") Reach		
15.0 Kg			
COLOR:	Material:	SHEET(S):	PROJET:
Yellow XTIRPA	Aluminum	3 / 4	IN-2210
			Rev.
			06



Product number: **IN-2210**

PAT.NO.:		
PRODUITS DE SERVICE PUBLICS INNOVA INC. INNOVA PUBLIC UTILITY PRODUCTS INC.		
<small>© 9105-0732 QUEBEC INC. and under exclusive license to INNOVA PUBLIC UTILITY PRODUCTS INC. (hereafter « INNOVA »). All rights reserved. Protected under the Copyright Act Canada and international treaties and agreements regarding copyrights. Violators are subject to prosecution and other legal recourse for infringement. Any reproduction, adaptation or other use or disclosure whatsoever, in totality or in part, and in any form or by any means whatsoever, strictly forbidden and requires the prior written approval of INNOVA. All rights are the exclusive property of 9105-0732 QUEBEC INC. and under exclusive license to INNOVA and cannot be used nor disclosed in any way at the without the prior written approval of INNOVA.</small>		
WEIGHT:	TITLE:	
33.0 Lb	Davit Arm with 610mm (24") Reach	
15.0 Kg		
COLOR:	Material:	SHEET(S):
Yellow XTIRPA	Aluminum	4 / 4
		PROJET:
		IN-2210
		Rev.
		06